

A REQUEST FOR PROPOSAL FOR PROFESSIONAL SERVICES CONTRACT

Department of Highways
Professional Services Procurement Bulletin 2024-05
Nelson | 4-80255 | New Route

This document constitutes a Request for Proposals for a Professional Service Contract from qualified individuals and organizations to furnish those services as described herein for the Commonwealth of Kentucky, Department of Highways.

I. PROJECT DESCRIPTION

County - Nelson
Route - New Route between KY-245 and US-31E near Cox's Creek
Item No. - 4-80255.00
Project Description - Improve mobility and connectivity west of Bardstown from KY-245 to US-31E near Cox's Creek

II. PROJECT INFORMATION

Project Manager - Kevin Blain, P.E.
User Division - Highway Design
Approximate Fee - \$1,300,000 - Preliminary Engineering & Environmental Services (Lump Sum)
Project Funding - STP Funds (Federal Funds)
Project Length - Approximately 4 miles

III. PURPOSE AND NEED

The purpose of this project is to provide a feasible, efficient, and safe solution to improve transportation network connectivity and reduce travel time in northwest Nelson County while limiting the impacts to the surrounding environment.

Nelson County has experienced growth in vehicular traffic and truck traffic that affects safety and mobility in northwest Nelson County. The project need is revealed in deficiencies of system linkage, including limited north-south routes on the west side of Bardstown, capacity, and safety. Traffic forecasts indicate that volumes will continue to increase in downtown Bardstown. In addition, local and regional truck traffic will shift because of continued industrial growth.

IV. DBE GOAL

The Consultant team shall include a DBE Participation Plan with their Response to Announcement to help the Department meet the 11.95% DBE goal established by FHWA. The plan should demonstrate how DBE companies will be mentored or used to assist in the area(s) pertaining to this contract. An additional page will be allowed in the Project Approach (Section 7)

to exhibit this plan. A maximum of four (4) points will be considered in the Evaluation Factors for the DBE Participation Plan.

V. SCOPE OF WORK

The selected consultant will be required to provide preliminary engineering and environmental services to explore alignments and typical sections that would fulfill the project's Purpose and Need. Since this is a new route, a range of alternatives should be developed seeking to minimize impacts while meeting the purpose and need. The selected consultant will be responsible for the preliminary roadway design of the new route, including, but not limited to: preliminary line and grade plans, preliminary drainage, public involvement activities, identifying right-of-way and utility impacts, cost estimates, developing a DES (Design Executive Summary), and survey activities to support preliminary engineering.

Environmental resources will be identified to help steer project decisions.

If desired by the Department, the project scope may be expanded to include design of an overlapping SYP project, KYTC Item #4-80254 (Improve connectivity west of Bardstown by construction new route from the Bluegrass Parkway beginning West of Exit 21 to US 31E near Cox's Creek) as a Contract Modification.

This project may be advanced to Final Design upon the completion of Preliminary Engineering and Environmental Services with a Contract Modification. The selected Consultant will then be required to provide engineering services to perform Final Roadway and Structural Design, including the preparation of any design studies, drainage design, right-of-way plans, construction plans, traffic control plans, and cost estimates as well as any other services that KYTC chooses not to perform with in-house forces.

VI. SPECIAL INSTRUCTIONS

The Department may retain any of the advertised services to be performed by in-house state forces.

Instructions for Response to Announcement can be found at:

<https://transportation.ky.gov/ProfessionalServices/Pages/Respond-to-an-Announcement.aspx>

VII. AVAILABLE STUDIES

[Western Bardstown Connectivity Study – Nelson | 4-8809 | New Route](#)

VIII. METHOD OF DESIGN

The selected Consultant shall utilize the most recent CADD Standards for Highway Plans Policy in the development of the highway plans. Refer to the 2019 CADD Standards for ORD V4 Project Development Memo for information pertaining to the latest CADD Standards and plan submittal.

IX. ENVIRONMENTAL SERVICES

Most necessary Environmental Services are expected to be provided by the Consultant. The anticipated environmental document will be higher than a Categorical Exclusion Level 2. The project should be scoped as an Environmental Assessment (EA) and if impacts are sufficiently minimal KYTC will consult with FHWA to determine if a CE Level 3 is appropriate. Prequalification of various Environmental Services are required to be identified in the Consultant's Response to Announcement.

X. PHOTOGRAMMETRIC SERVICES

The Consultant will provide mapping and will furnish manuscripts in ORD format. Statewide Elevation data and Aerial photography can be found at the following link [KyFromAbove - Kentucky's Aerial Photography & Elevation Data Program](#). The selected Consultant shall supplement this information with conventional surveying as determined during project scoping.

XI. STRUCTURE DESIGN

Structure Design is not anticipated for Preliminary Design. When the project advances to Final Design and if the selected Consultant is retained for Final Design services, the selected Consultant shall do the necessary engineering services to submit to the KYTC an Advanced Situation Folder(s) for the appropriate structure(s). The selected Consultant may be responsible for any necessary Structure Design services. Structure Design of the proposed structure(s) may be added as a Contract Modification. Prequalification in the area of Structure Design is not required to be identified in the Consultant's Response to Announcement.

XII. GEOTECHNICAL SERVICES

The selected Consultant may provide all Geotechnical Services required for the project. The Preliminary Design contract may include preliminary geotechnical services to review available geological, mining, or other geotechnical information that could influence the selection of the preferred alternate. Geotechnical services necessary for the completion of Final Design may be added by contract modification at the appropriate time. At any time, if the Department has the capacity to provide these services, the Department may retain the advertised geotechnical services. Prequalification in the area of Geotechnical Services is not required to be identified in the Consultant's Response to Announcement.

XIII. TRAFFIC ENGINEERING

The Department will provide all traffic projections and related information.

XIV. UTILITIES

The selected Consultant shall provide a project location map to the Department. The Department will send project location maps to all potential utility contacts to determine whether they may have existing utilities within these project limits. The Department will develop the utility contact list. Facility atlas maps received for this project will be provided to the selected Consultant. All utilities including aerial carriers shall be field-verified by the Consultant. Sizes and types of underground

and aerial utilities shall be identified on the plans for each alignment alternative in the PL&G submittal. The selected Consultant may be required to provide utility related services for this project, which may include construction inspection.

The selected Consultant shall acquire adequate information regarding existing utility features to determine or assist the Cabinet in determining the extent to which potentially impacted utilities may impact the project budget or schedule. The selected Consultant should be aware of and bring attention to any potential utility impacts that may result in significant cost or time to relocate.

XV. PREQUALIFICATION REQUIREMENTS

To respond to this project the Consultant must be prequalified in the following areas by the response due date of this advertisement:

ENVIRONMENTAL & UST SERVICES

- UST & Hazmat Preliminary Site Assessment (Phase 1)
- *UST Closure Assessment** (see note below)
- *Hazmat Corrective Action** (see note below)
- *UST Site Investigation (Phase 2)** (see note below)
- *Hazmat Site Investigation (Phase 2)** (see note below)
- *UST Corrective Action** (see note below)

ENVIRONMENTAL AQUATIC & TERRESTRIAL ECOSYSTEMS ANALYSIS

- Fisheries
- Botany
- Terrestrial Zoology
- Wetlands
- Freshwater Macroinvertebrates
- Water Quality

ENVIRONMENTAL ARCHAEOLOGY & OTHER SERVICES

- Air Quality Analysis
- Prehistoric Archaeology
- Socio-Economic Analysis
- Highway Noise Analysis
- Historic Archaeology
- Environmental Document Writing & Coordination
- Cultural-Historic Analysis
- *Stream & Wetland Mitigation** (see note below)

ROADWAY DESIGN

- Rural Roadway Design
- Advanced Traffic Engineering Design & Modeling
- Surveying
- *Photogrammetry & Related Services** (see note below)
- *Advanced Drainage Analysis & Design** (see note below)
- *Urban Roadway Design** (see note below)

Geotechnical Services* (see note below)

- *Geotechnical Engineering**

- *Geotechnical Drilling**
- *Geotechnical Laboratory Testing**

*Right of Way** (see note below)

- *Acquisition**
- *Appraisal**

*Structure Design** (see note below)

- *Spans Under 500 Feet**

*Utility Design** (see note below)

- *Utility Construction Inspection**
- *Utility Preconstruction Coordination**

** Note – These prequalifications are not required with the initial proposal as it is uncertain to the extent practicable if they are necessary. Should these services become necessary during the delivery of the project in this or future phases, the selected Consultant team must obtain the required qualifications before providing those services or bring on a prequalified subconsultant at that time.*

XVI. PROCUREMENT SCHEDULE

Dates other than Response Date are tentative and provided for information only.

- Advertisement Date: November 14, 2023
- Response Date: December 6, 2023 by 4:30 PM ET (Frankfort Time)
- First Selection Meeting: December 8, 2023
- Final Selection: December 20, 2023
- Pre-Design Conference: January 3, 2024
- Consultant Fee Proposal: January 12, 2024
- Contract Negotiations: January 24, 2024
- Notice to Proceed: February 14, 2024

XVII. PROJECT SCHEDULE

- Alternative Review Meeting: September 2024
- Public Meeting: January 2025
- Preliminary Line and Grade: May 2025

XVIII. EVALUATION FACTORS

Consultants will be evaluated by the selection committee based on the following weighted factors:

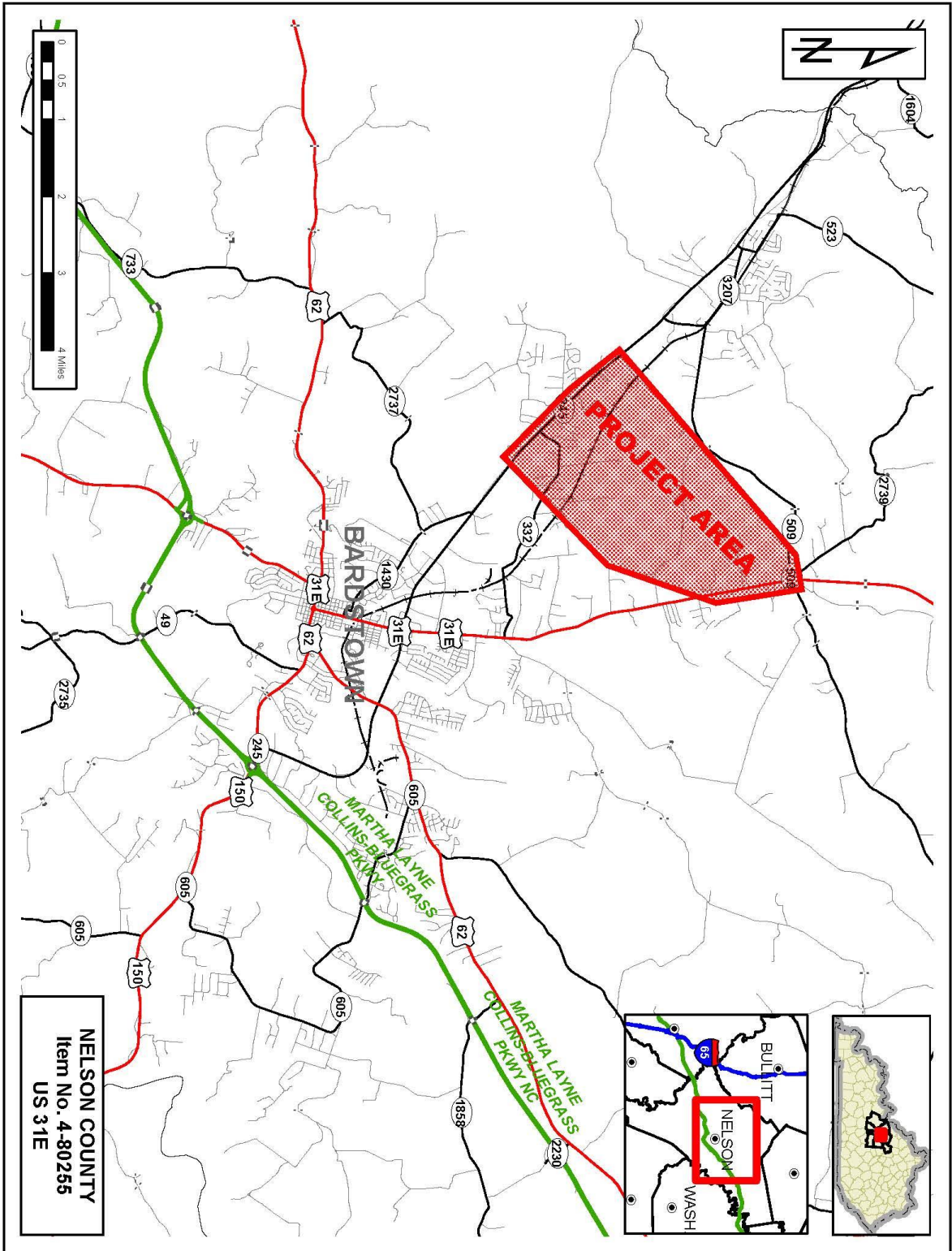
1. Project approach and proposed procedures to accomplish the services for the project. (20 Points)
2. Relative experience of consultant personnel assigned to project team with highway project for KYTC and/or federal, local or other state governmental agencies. (15 Points)

3. Past record of performance on projects similar in type and complexity. (15 Points)
4. Capacity to comply with project schedule. (10 Points)
5. DBE Participation Plan. (4 Points)
6. Knowledge of the locality and familiarity of the general geographic area. (2 Points)

XIX. SELECTION COMMITTEE MEMBERS

1. Chris Hampton, P.E., User Division
2. Adam Ulrich, P.E., User Division
3. Emily Deason, P.E., Secretary's Pool
4. Amanda Desmond, P.E., Secretary's Pool
5. Brian Wood, P.E., Governor's Pool

XX. AREA MAP



Disclaimer: KYTC provides this map as a reference only. Users are to validate information independently. Copyright: 2023 Kentucky Transportation Cabinet. All rights reserved.

Date: 10/25/2023



NELSON COUNTY
Item No. 4-80255
US 31E